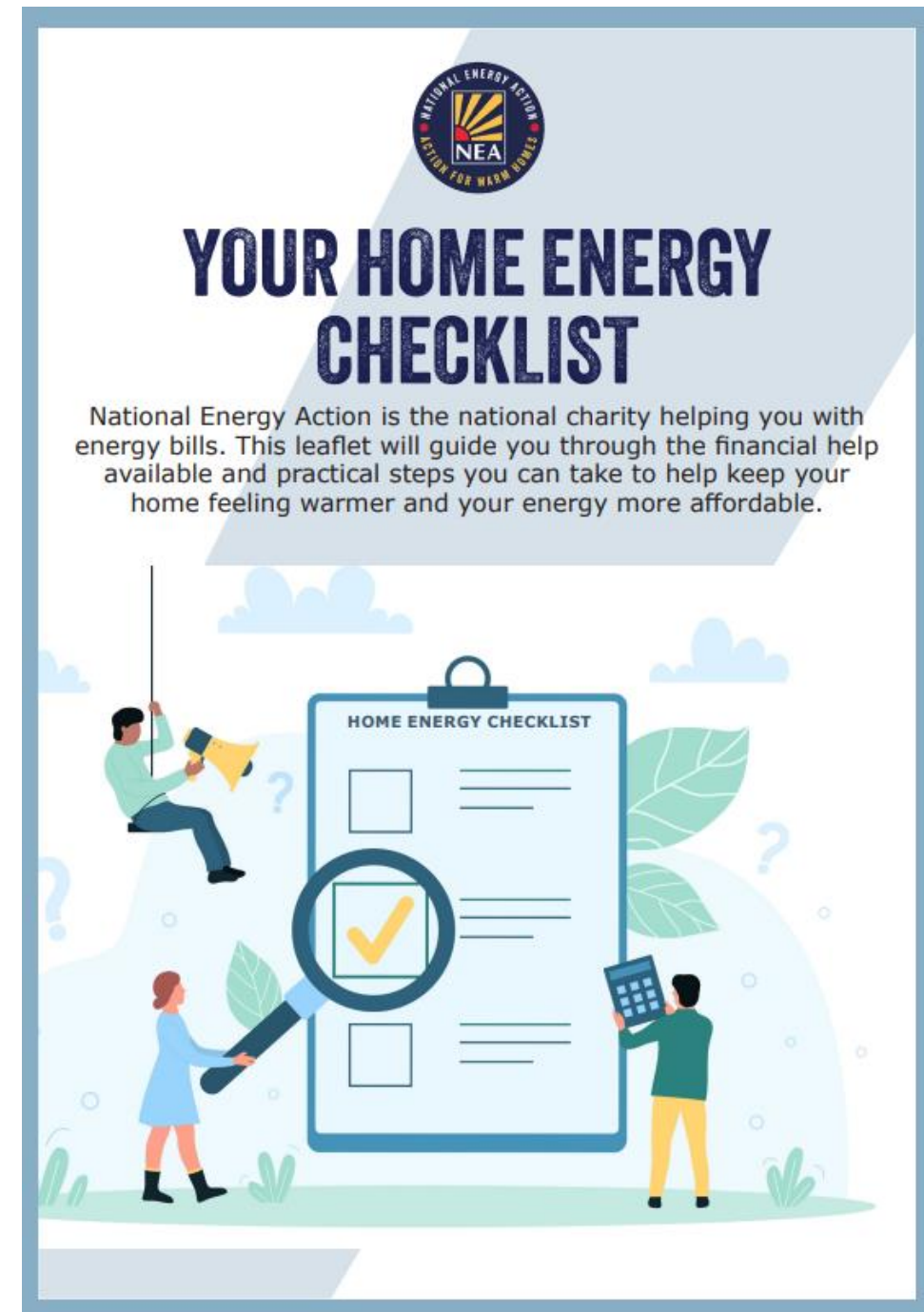


# Fuel poverty

- Professional referral channel into NEA and Warm Homes, Healthy Futures programme (split between standard referrals and referrals from clients with recognised health issues)
- GP referrals through PRISM. Autumn campaign raising profile of service.
- Raising awareness of health issues connected to living in a cold home, and promoting support channels within communities through engagement events, and promoted through Community Wellbeing Champions
- Engagement presence within LCC warm spaces



# Fuel poverty

- Referral channels within food aid hubs connected to Feeding Leicester and Leicester Food Partnership
- Support for staff within the NHS offered through Health and Wellbeing channels
- Accessing care home staff communities through provider forums
- Mirror of winter 2024 promotion campaign including social media and electronic boards within Leicester
- Data

